

HULL ELECTRIC
TWO CAR TRAINS
September 1913.

n taken
ally ad-
en miles
, to St.
id track
10 miles
onstruc-
ing be-
Railway
be com-

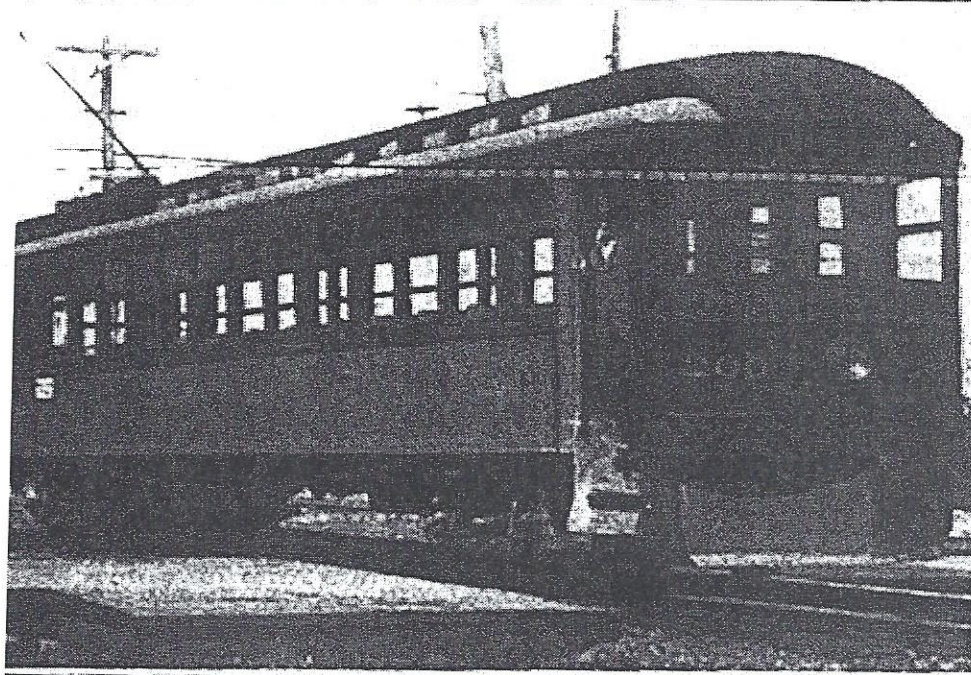
it is not
rate its
r. Traf-
and for
the de-
ns of in-
by the
station,
of cap-
usly ap-
eage. It
use cars
motors,
exhaus-

Two Car Trains on Hull Electric Com- pany's Railway.

The illustration on this page shows Hull Electric Co.'s two car train on curve of 40 ft. radius. These trains are used to handle traffic during rush hour and during race week they proved very efficient and economical between Ottawa and Connaught Park Jockey Club.

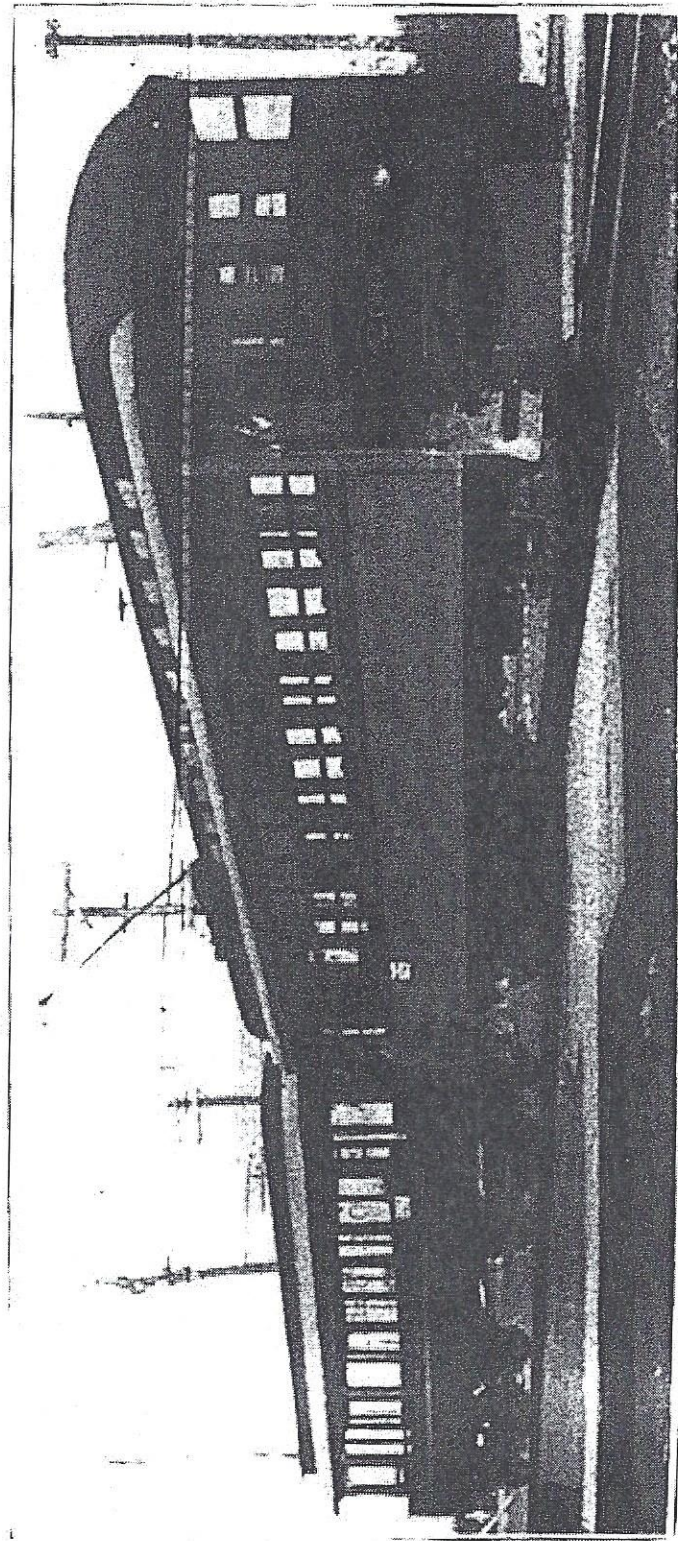
The cars are fitted with Westinghouse S. M. E. air brakes and automatic couplers and air couplers. The trailer has a combined entrance and exit at the front end and there are no steps on the rear of the trailer. Both cars are operated A. Y. E. with one conductor on the roof of the motor car and one conductor in charge of the trailer.

We are indebted to G. Gordon Gamble, M.Sc., A.M., Can. Soc. C.E., General Superintendent, for the photograph and information.



been decided to use cars
 of various types, made
 by the engineer and the director
 of the continent and in Europe,
 manufactured in England
 and the most outstanding

M.Sc., A.M. Can Soc. C.E., General Su-
 perintendent for the photograph and in-
 formation.



Two Car Train, Hull Electric Co.

Electric Railway Finance, Meetings, Etc.
 British Columbia Electric Ry. Gross
 earnings for June, \$543,186, operating ex-

Electric Railway Finance, Meetings, Etc.
 British Columbia Electric Ry. Gross
 earnings for June, \$543,186, operating ex-