

GRAND
TRUNK
STRATFORD
STATION

C.P.R.,
ton, in
items

The Grand Trunk Railway's New Station at Stratford, Ont.

Trans-
to died
ort ill-
erland,
d rail-
when
clerk,
and
Eng.;
chief
ge of
chief
Agent,
w part
is ser-
g from
hen he
er and

ntment
ion, C.
ur last
4, 1882,
1898,
, 1901,
colonial
o June,
nd re-

The new station which the G.T.R. has built at Stratford, Ont., was formally opened to the public, Dec. 17. It replaces the one which was built in 1867, and which for years has been inadequate for the needs of the traffic. A new station at Stratford was among the things promised on the occasion of the first visit of Sir Charles Rivers-Wilson and the late C. M. Hays, as President and General Manager respectively, to the city. This long promised station is now an accomplished fact.

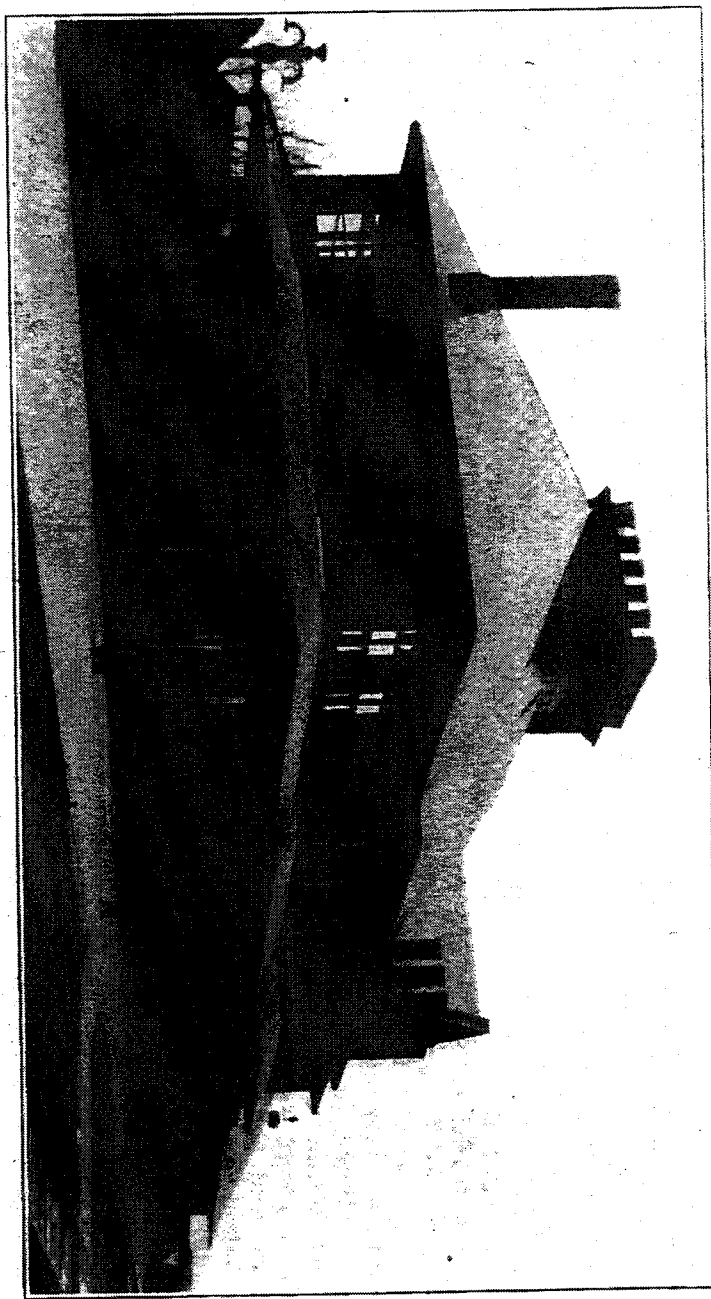
The new building, of which an illustration is given on this page, has a frontage on Shakespeare St. of $151\frac{1}{2}$ ft., and is 60 ft. wide at its widest part—the centre. At this point is the main entrance, which is sheltered by a canopy 18 ft. 10 ins. by 16 ft. $8\frac{1}{2}$ ins. Inside the main door is a loggio, $15\frac{1}{4}$ ft. by 16 ft. $9\frac{1}{2}$ ins., which leads to the general waiting room, 30 ft. $1\frac{1}{4}$ in. from front to rear, by 80 ft. In the centre, opposite the main entrance, is the ticket office, $15\frac{1}{2}$ ft. by 16 ft., which extends $7\frac{1}{2}$ ft. out on to the platform. To the right of the loggio are the men's smoking room and lavatories, and on the left the women's waiting room and lavatories. The lunch room,



February
1914

P.R., Calgary, was announced in our last issue, was born at Aubac, N.B., Nov. 24, 1882, and entered railway service June, 1898, since when he has been, to Apr., 1901, operator and assistant agent, Intercolonial Ry. at various points; Apr., 1901, to June, 1902, operator, Pacific Division, and re-

front to rear, by 32 ft. in the corner of the main entrance, is the ticket office, 15½ ft. by 16 ft., which extends 7½ ft. out on to the platform. To the right of the loggia are the men's smoking room and lavatories, and on the left the women's waiting room and lavatories. The lunch room,



Grand Trunk Railway Station at Stratford, Ont.

lieving agent, C.P.R., at various points; June, 1902, to May, 1906, dispatcher, C.P.R., Revelstoke, B.C.; May, 1906, to Feb., 1907, dispatcher, C.P.R., Calgary, Alta.; Feb., 1907, to Apr., 1911, dispatcher and acting Chief Dispatcher, C.P.R., Cranbrook, B.C., and McLeon, Alta.; Apr. to Nov., 1911, dispatcher and acting Chief Dispatcher, C.P.R., Calgary, Alta.; Nov., 1911, to Nov., 1913, Chief Dispatcher, C.P.R., Medicine Hat, Alta.

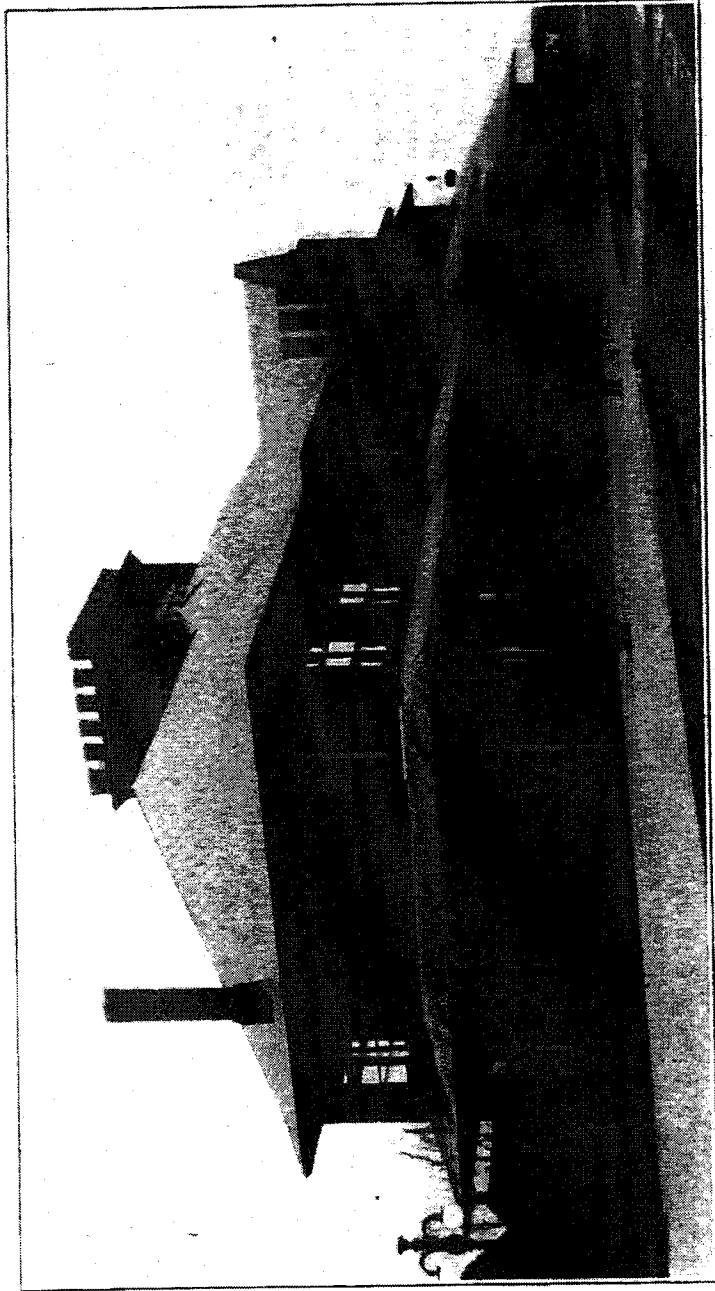
The C.P.R. medical system on the Pacific Division is, according to a Vancouver, B.C., report, being reorganized. F. W. Peters, General Superintendent, was in Nelson, B.C., Jan. 14, discussing the proposed

with kitchen and store, 40 ft. by 32 ft., is to the right, with its main entrance from the waiting room, while to the left is the parcel and baggage office and baggage room, 38 by 32 ft. The second story is devoted entirely to offices. The western end is given over to the private and general offices of the Superintendent; next comes the Trainmaster's office, and on the south side are the dispatchers' offices. Following along are the offices of the Divisional Freight Agent, the General Yardmaster, the Supervisor of Bridges and Buildings, and the Resident Engineer. East of the station building, and connected with it by an umbrella roof of 75 ft., is the express building,

February
1914

P.R., Calgary, was announced in our last issue, was born at Aulac, N.B., Nov. 24, 1882, and entered railway service June, 1898, since when he has been, to Apr., 1901, operator and assistant agent, Intercolonial Ry. at various points; Apr., 1901, to June, 1902, operator, Pacific Division, and re-

front to rear, by 32 ft. in the corner, opposite the main entrance, is the ticket office, 15½ ft. by 16 ft., which extends 7½ ft. out on to the platform. To the right of the loggio are the men's smoking room and lavatories, and on the left the women's waiting room and lavatories. The lunch room,



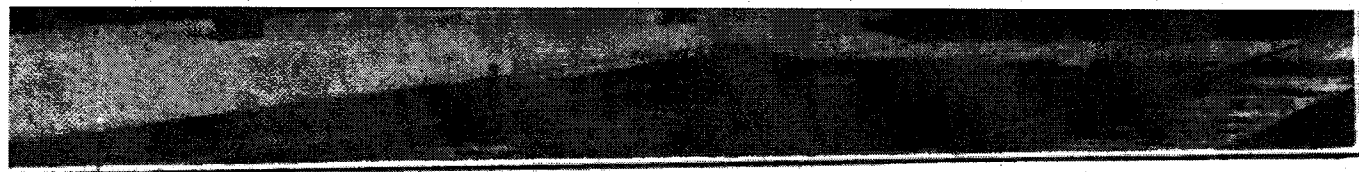
Grand Trunk Railway Station at Stratford, Ont.

lieving agent, C.P.R., at various points; June, 1902, to May, 1906, dispatcher, C.P.R., Revelstoke, B.C.; May, 1906, to Feb., 1907, dispatcher, C.P.R., Calgary, Alta.; Feb., 1907, to Apr., 1911, dispatcher and acting Chief Dispatcher, C.P.R., Cranbrook, B.C., and McLeon, Alta.; Apr. to Nov., 1911, dispatcher and acting Chief Dispatcher, C.P.R., Calgary, Alta.; Nov., 1911, to Nov., 1913, Chief Dispatcher, C.P.R., Medicine Hat, Alta.

The C.P.R. medical system on the Pacific Division is, according to a Vancouver, B.C., report, being reorganized. F. W. Peters, General Superintendent, was in Nelson, B.C., Jan. 14, discussing the proposed

with kitchen and store, 40 ft. by 32 ft., is to the right, with its main entrance from the waiting room, while to the left is the parcel and baggage office and baggage room, 38 by 32 ft. The second story is devoted entirely to offices. The western end is given over to the private and general offices of the Superintendent; next comes the Trainmaster's office, and on the south side are the dispatchers' offices. Following along are the offices of the Divisional Freight Agent, the General Yardmaster, the Supervisor of Bridges and Buildings, and the Resident Engineer. East of the station building, and connected with it by an umbrella roof of 75 ft., is the express building.

February 1914



Railway Station at Stratford, Ont.

points; with kitchen and store, 40 ft. by 32 ft., is
C.P.R., to the right, with its main entrance from
., 1907, the waiting room, while to the left is the
., 1907, parcel and baggage office and baggage room,
g Chief 38 by 32 ft. The second story is devoted
., and entirely to offices. The western end is
Dispatch- given over to the private and general offices
R., Cal- of the Superintendent; next comes the
3, Chief Trainmaster's office, and on the south side
Ita. are the despatchers' offices. Following
along are the offices of the Divisional
Pacific Freight Agent, the General Yardmaster, the
er, B.C., Supervisor of Bridges and Buildings, and the
Peters, Resident Engineer. East of the station
lson, B. building, and connected with it by an um-
proposed brella roof of 75 ft., is the express building,
ce with 32 ft. by 57 ft. The central tower is 60 ft.
proposed high, and the two additional stories in it
and a are fitted as file rooms.

oyes on The building is constructed of Saginaw
monthly vitrified brick on a concrete foundation,
rich dif- with a slate roof. The internal fittings of
the public parts of the station are tile floors,
oak panelled ceilings, with walls finished in
burlap. A new brick platform has been laid.

clerk in
Pacific
ed, Jan
and D

February
1914

C.P.R.,
ton, in
items

The Grand Trunk Railway's New Station at Stratford, Ont.

Trans-
no died
ort ill-
erland,
d rail-
when
clerk,
and
Eng.;
chief
ge of
chief
Agent,
w part
is ser-
; from
hen he
er and

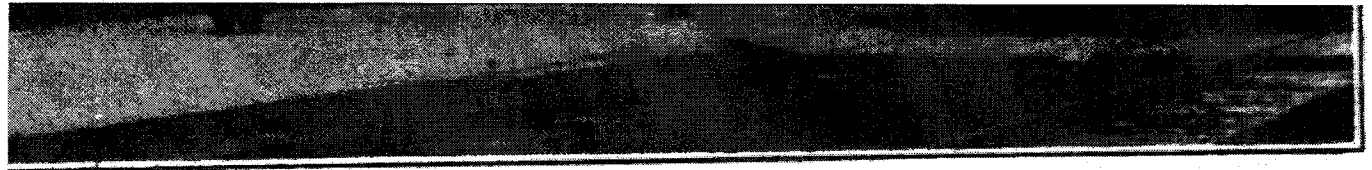
ntment
ion, C.
ur last
4, 1882,
1898,
, 1901,
colonial
o June,
nd re-

The new station which the G.T.R. has built at Stratford, Ont., was formally opened to the public, Dec. 17. It replaces the one which was built in 1867, and which for years has been inadequate for the needs of the traffic. A new station at Stratford was among the things promised on the occasion of the first visit of Sir Charles Rivers-Wilson and the late C. M. Hays, as President and General Manager respectively, to the city. This long promised station is now an accomplished fact.

The new building, of which an illustration is given on this page, has a frontage on Shakespeare St. of 151½ ft., and is 60 ft. wide at its widest part—the centre. At this point is the main entrance, which is sheltered by a canopy 18 ft. 10 ins. by 16 ft. 8½ ins. Inside the main door is a loggio, 15¼ ft. by 16 ft. 9½ ins., which leads to the general waiting room, 30 ft. 1¼ in. from front to rear, by 80 ft. In the centre, opposite the main entrance, is the ticket office, 15½ ft. by 16 ft., which extends 7½ ft. out on to the platform. To the right of the loggio are the men's smoking room and lavatories, and on the left the women's waiting room and lavatories. The lunch room,



February
1914



Railway Station at Stratford, Ont.

points; with kitchen and store, 40 ft. by 32 ft., is
C.P.R., to the right, with its main entrance from
., 1907, the waiting room, while to the left is the
., 1907, parcel and baggage office and baggage room,
g Chief 38 by 32 ft. The second story is devoted
., and entirely to offices. The western end is
Dispatch- given over to the private and general offices
R., Cal- of the Superintendent; next comes the
3, Chief Trainmaster's office, and on the south side
Ita. are the despatchers' offices. Following
along are the offices of the Divisional
Pacific Freight Agent, the General Yardmaster, the
er, B.C., Supervisor of Bridges and Buildings, and the
Peters, Resident Engineer. East of the station
lson, B. building, and connected with it by an um-
roposed brella roof of 75 ft., is the express building,
ce with 32 ft. by 57 ft. The central tower is 60 ft.
roposed high, and the two additional stories in it
and a are fitted as file rooms.

oyes on The building is constructed of Saginaw
monthly vitrified brick on a concrete foundation,
rich dif- with a slate roof. The internal fittings of
the public parts of the station are tile floors,
oak panelled ceilings, with walls finished in
burlap. A new brick platform has been laid.

clerk in
Pacific
ed, Jan
and D

February
1914