

FINCH, PRUYN

LAURIER STATION
QUEBEC

Laurier Station

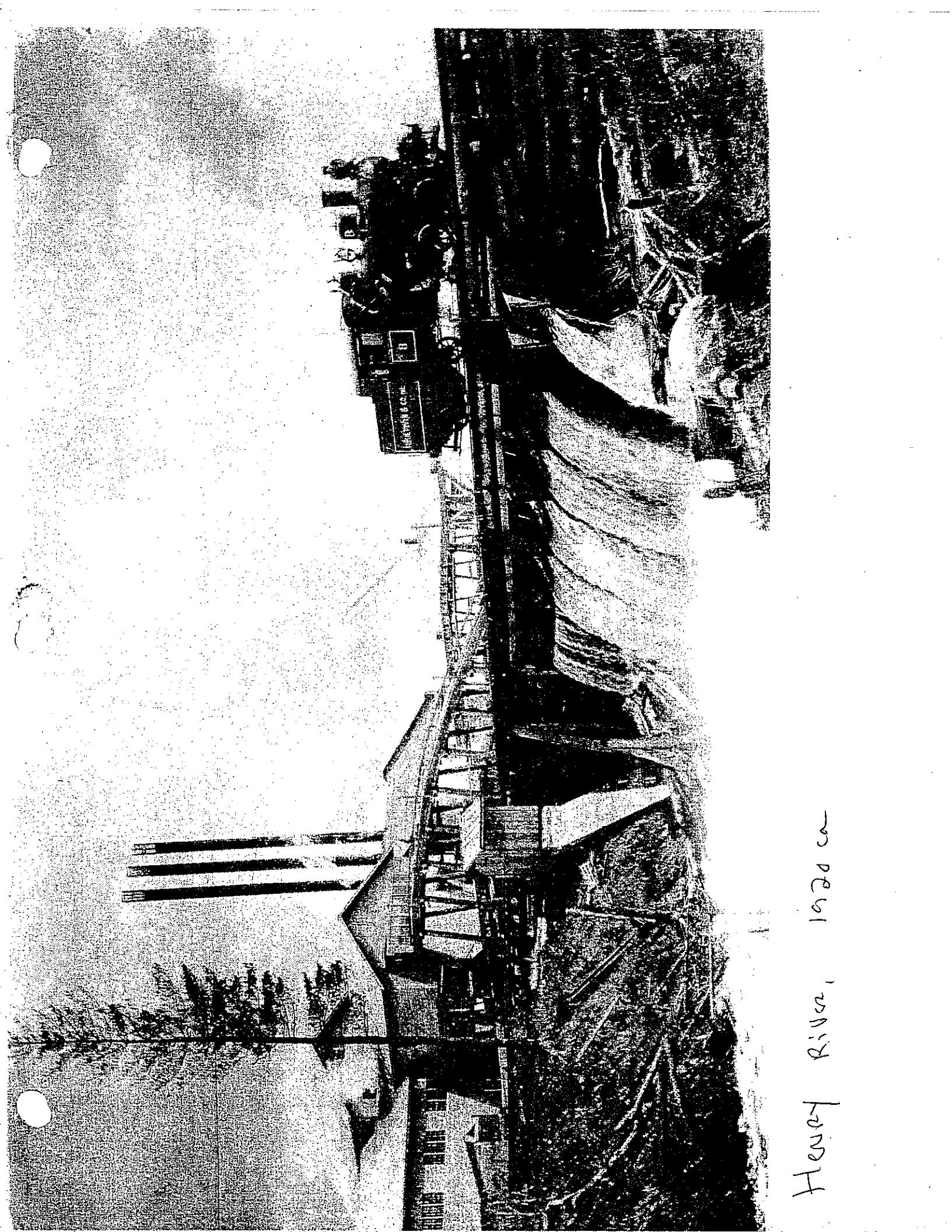
Also shown as Riviere Henri, between Villeroi and Charny, Mill closed 1927, equipment to Zagerman 1928. The company was authorized to cross the ICR 3¼ miles west of Laurier station by PC 553 of 27 February 1914. The lease was surrendered 1 March 1921. A location of Gouraud is also shown for this company.

Finch Pruyn and Co.

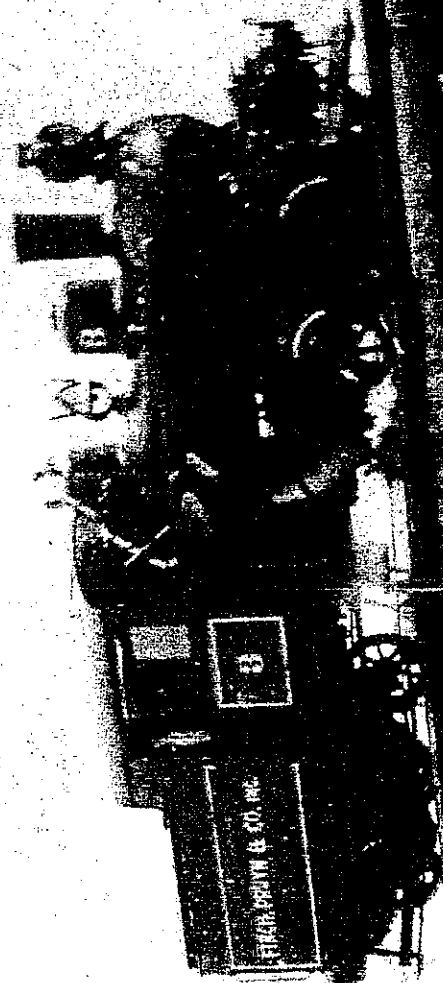
1?	Lima	uu553		Shay DU
2	Heisler	1274	1913	Heisler 2 DU
3	Heisler	1290	1914	Heisler 2

[1] Finch Pruyn & Co.;
[2] may have gone to Gilmour Lumber, Ont.
[n] Finch Pruyn #2;
[2] Gilmour Lumber #1, 1928.
[np] Finch Pruyn #3;
(2) Consolidated Water, Power & Paper #19-200,
WI.

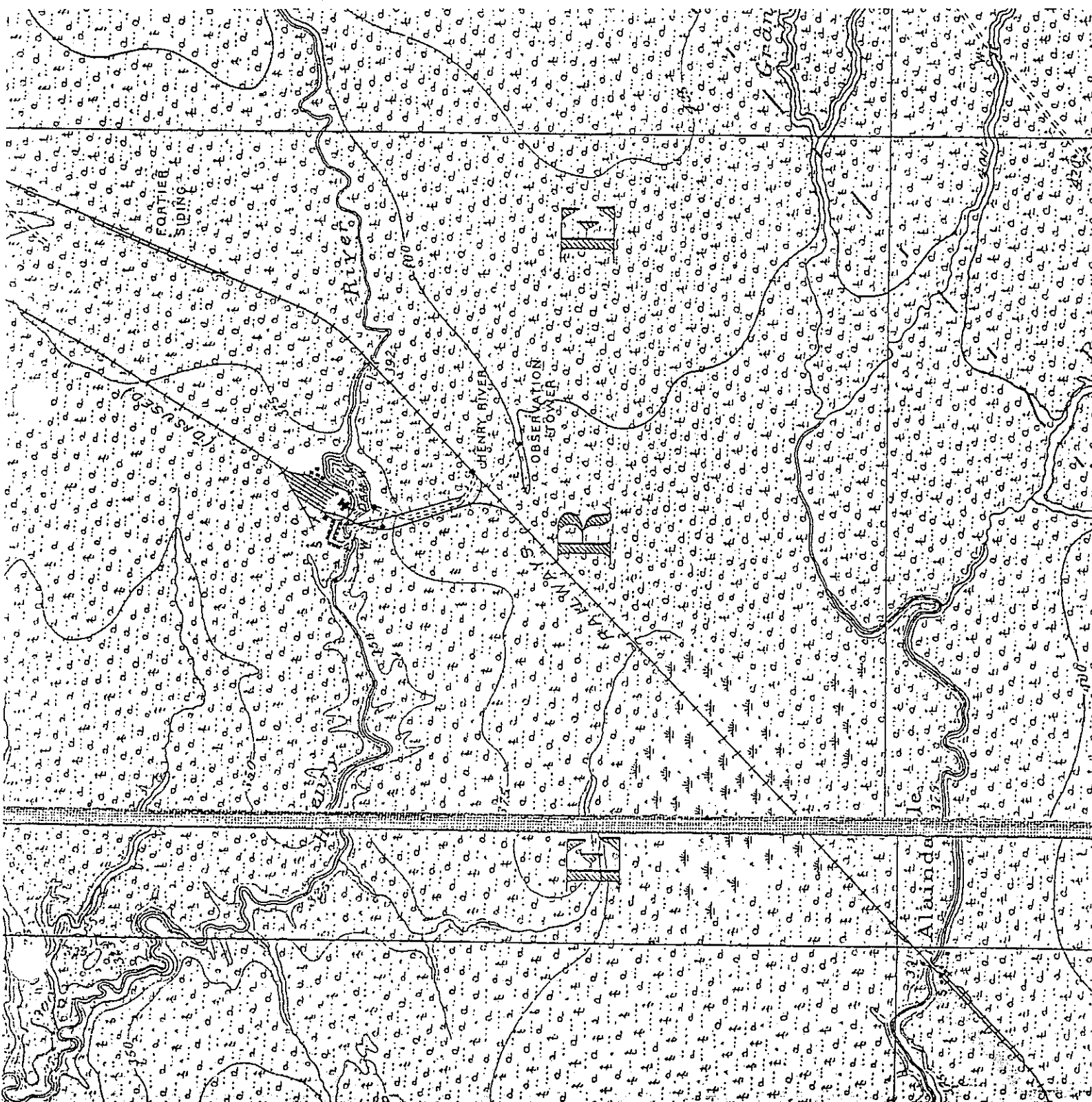
Collin Churcher

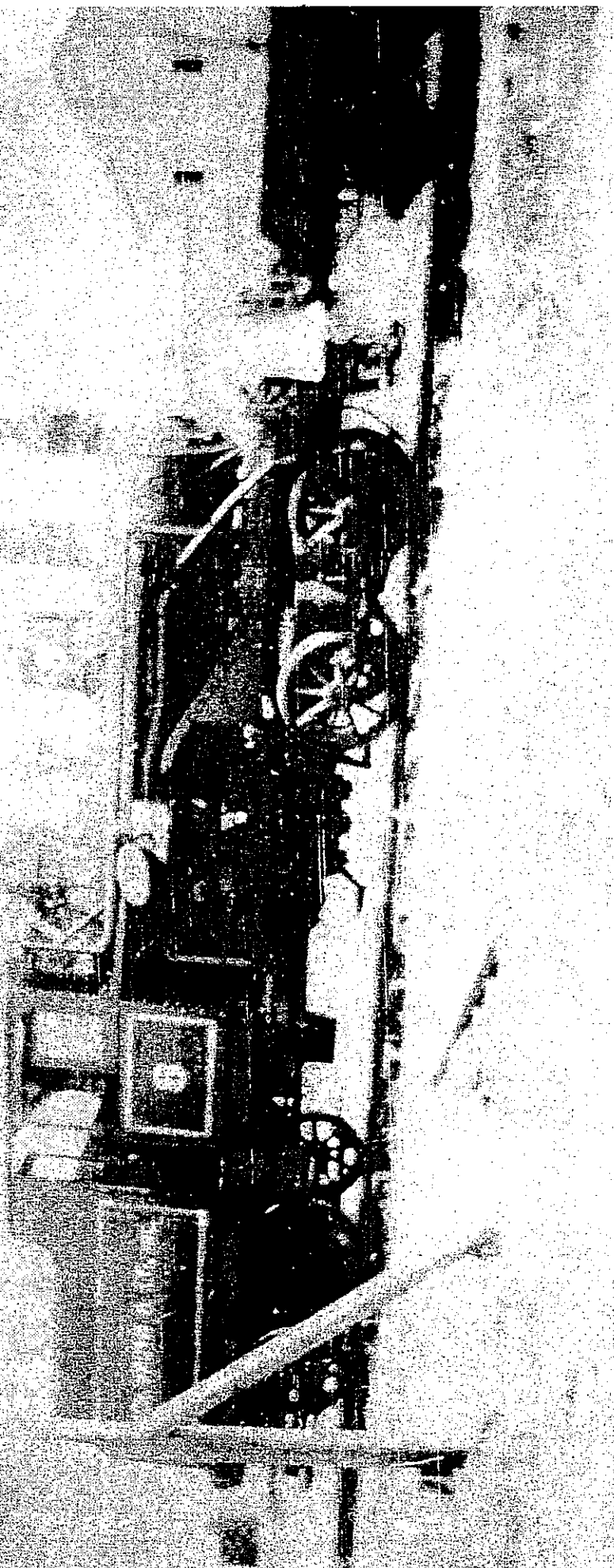


Henry River, 1920 ca



Henry River
"July"





Cut 1919

Cut 1918

R.R.

Head of Mill Race
Sta. 6

St. Louis to St. Paul

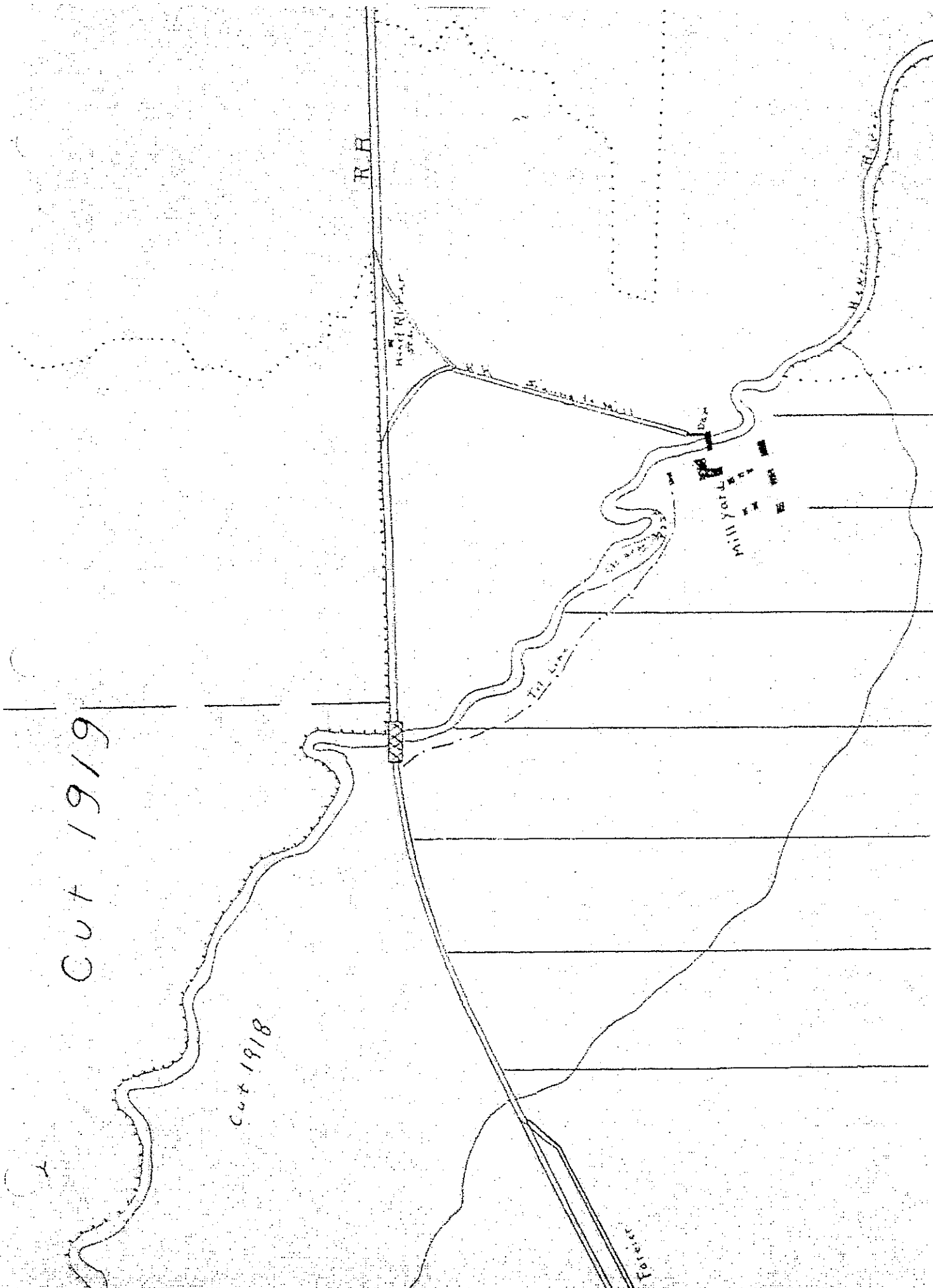
Dam

Mill
Yards

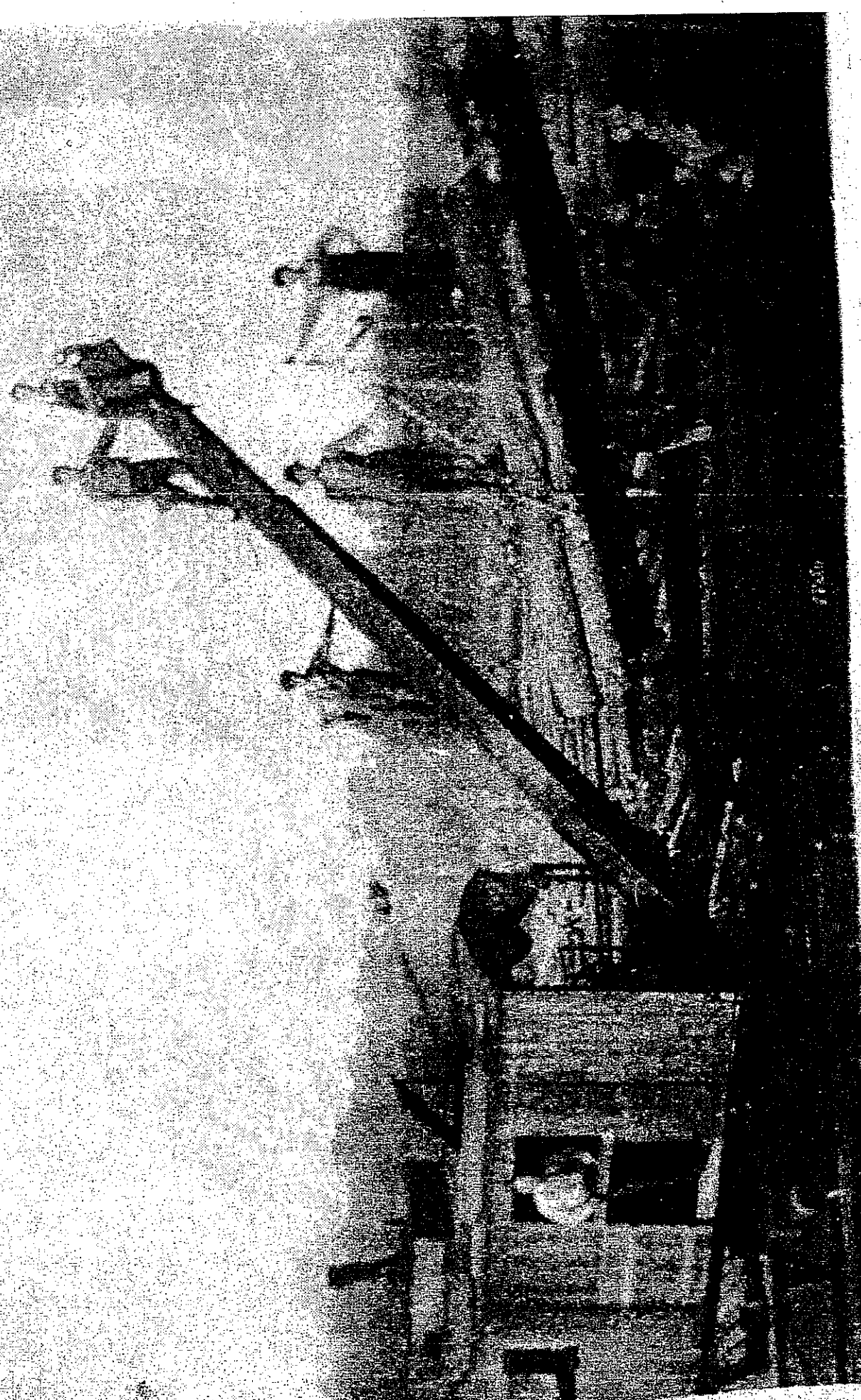
Tr. Line

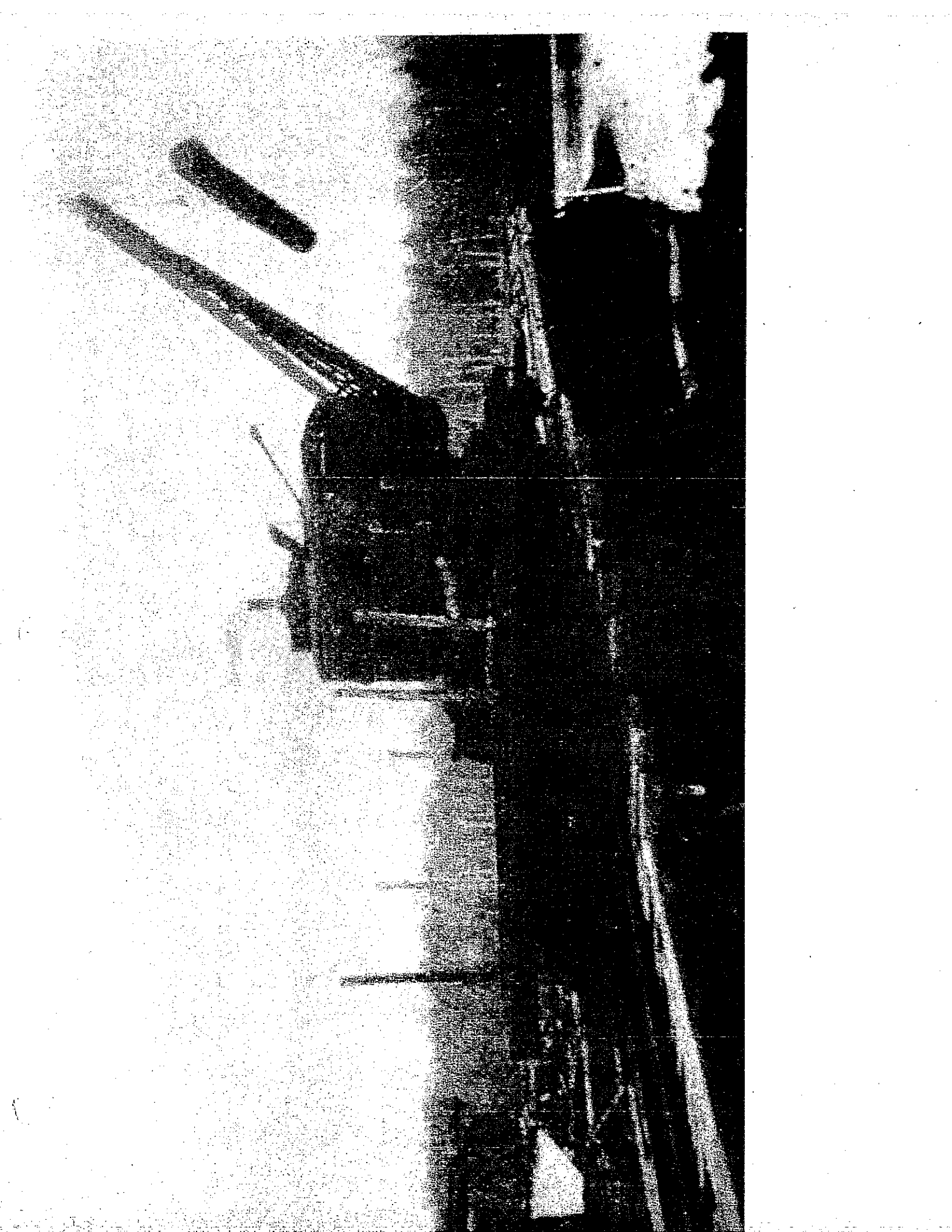
Forest

Head of Mill Race

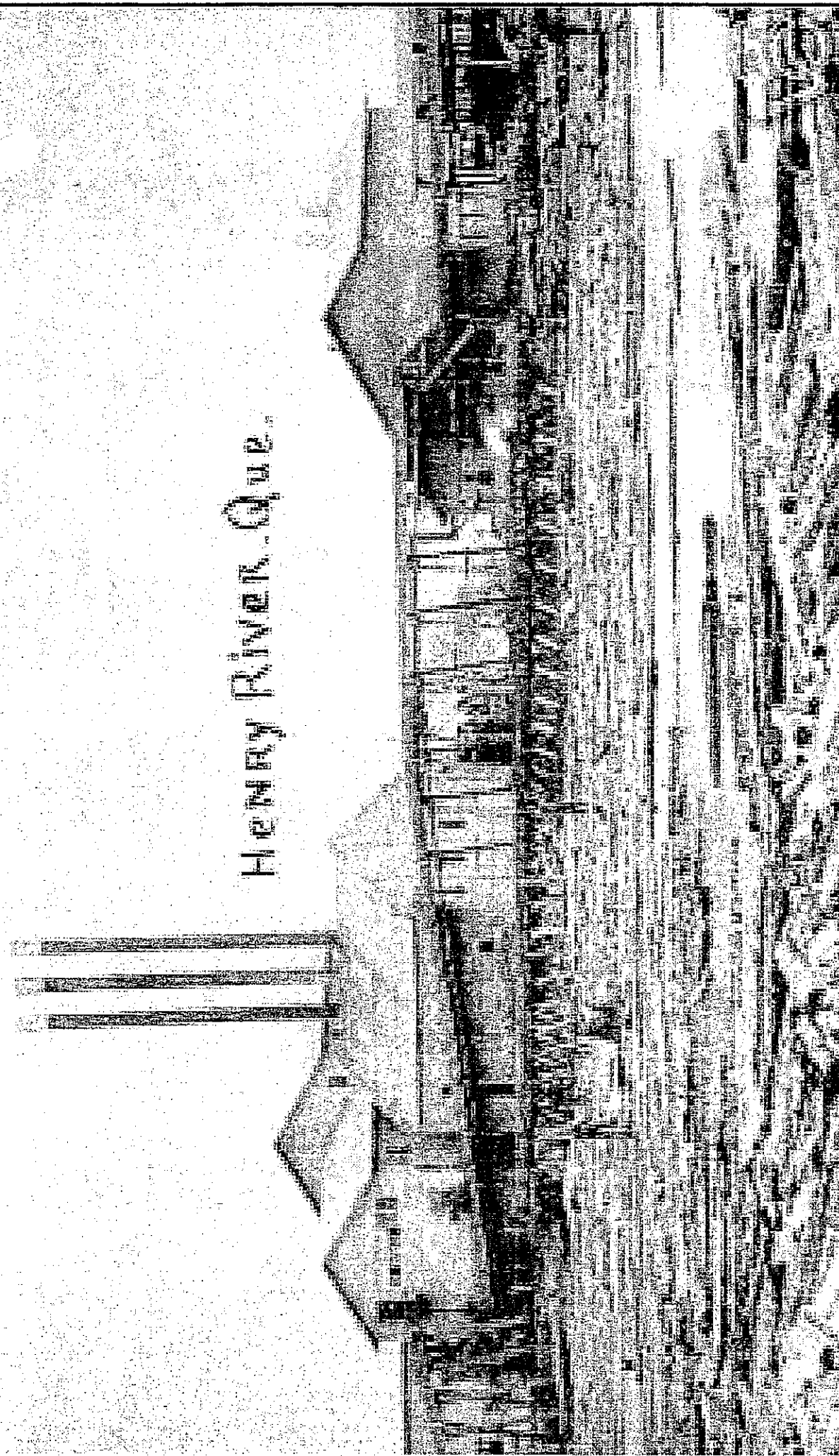


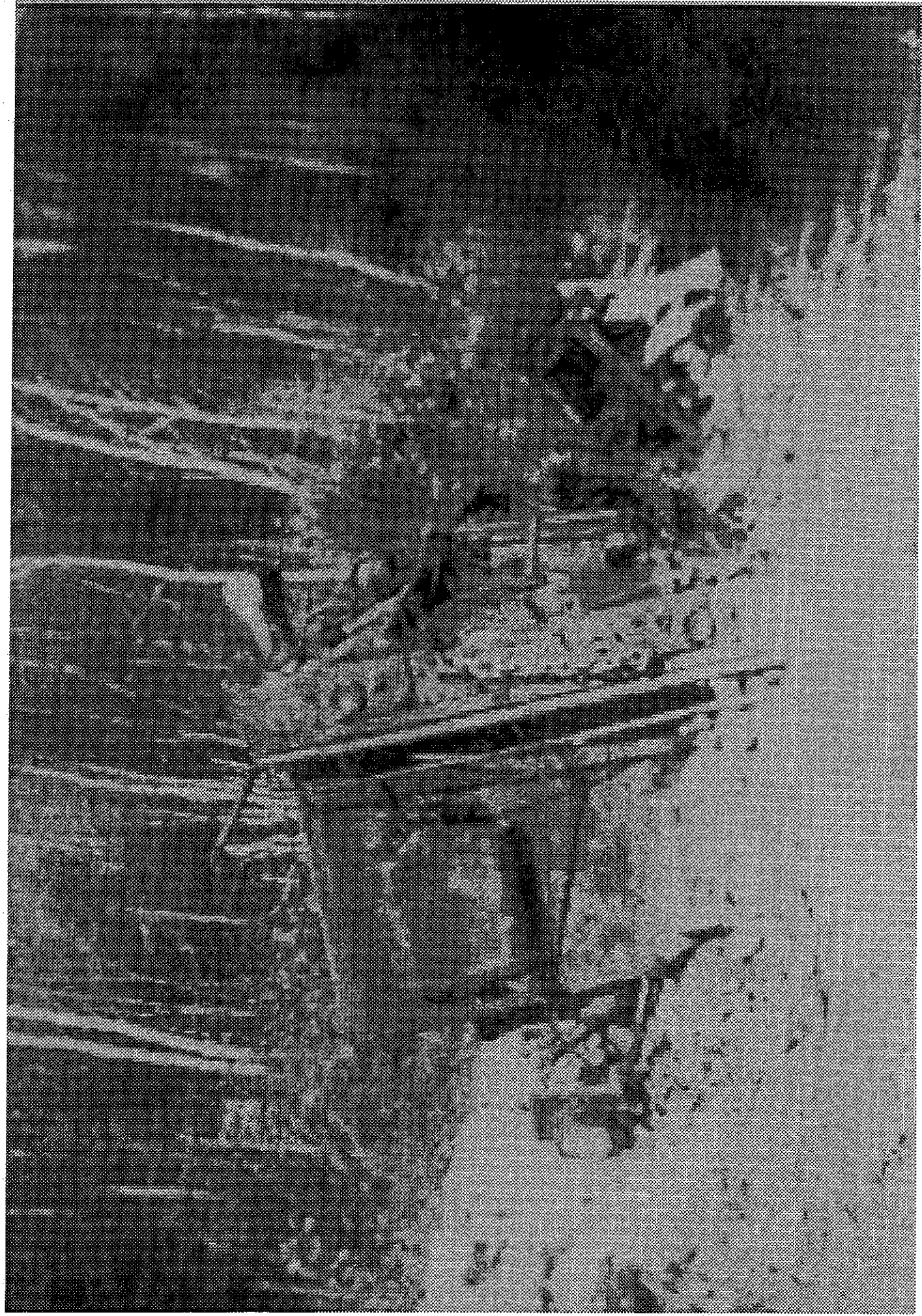
Chlorophyll. 26. 11. 11





HENRY RIVER QUE





Déraillement sur le C-F de la Rivière-Madeleine, vers 1920 Haut de la Montagne